

# ExtremeWireless™ WiNG Express Manager NX 5500E

High-Performance Enterprise-Class WLANs, Simplified for Smaller Businesses

## EXTREMEWIRELESS WING EXPRESS MANAGER IS IDEAL FOR:

### RETAIL

- Small to midsize retail stores

### WAREHOUSING

- Small to midsize warehouses

### MANUFACTURING

- Production lines in small to midsize manufacturing plants

### HEALTHCARE

- Small to midsize hospitals and clinics



## Product Overview

In today's mobile economy, small to midsize businesses share many of the same wireless networking needs as a large business. Employees, business partners, and customers need and expect the same high-performance enterprise-class wireless LAN (WLAN) connectivity — a WLAN that offers the wired-style speeds required to maximize network efficiency and rock-solid security, with around-the-clock dependability, automated network tuning, and self-healing. And just like large businesses, small to medium-sized businesses need the network analytics and tools to monitor, manage, and troubleshoot the WLAN and all its connected devices.

The ExtremeWireless WiNG Express NX 5500E makes cost-effective, high-performance, enterprise-grade wireless networking a reality for your growing business and operations. Now, you can give your workers and customers the reliable wireless connectivity they need to maximize productivity and deliver best-in-class service to each and every customer. The result? Real competitive advantage.

## FLEXIBILITY FOR YOUR GROWING BUSINESS

The NX 5500E offers the agility a growing business needs. Your network needs could change fast, from expanding office or warehouse space at the same location to acquiring multiple locations across the country. The NX 5500E provides network flexibility and simple scaling, supporting various network topologies and hierarchical management, accommodating up to 512 access points.

## GET YOUR NETWORK AND REMOTE SITES UP AND RUNNING IN MINUTES WITH EASY ZERO-TOUCH DEPLOYMENTS

With WiNG Express, you don't need to understand advanced configuration options to get your network up and running. Easy site setup and intuitive auto-provisioning policy allows easy multi-site deployments. Just power up your access points to automatically discover and provision your access points with the predefined configurations. Your enterprise-class WLAN is ready to go in minutes.

When it comes to remote site deployments, the NX 5500E supports up to 128 access points. No local IT staff is needed. No local controller appliances required. Simply install the APs, and when they are powered on, they will be automatically

configured with the latest firmware and location policies, and brought online. It's that simple!

### **INVESTMENT PROTECTION**

As your business continues to grow, your needs may scale beyond the NX 5500E, but with WiNG Express's hierarchical management, the NX 5500E continues to be part of the network. It can be managed by a WiNG Express NX 7500E or VX 9000E, expanding your network capabilities to more sites, more users, and up to 1024 access points with seamless migration and

management without re-architecting the network and requiring new training. This is the investment protection and return on investment that midsize businesses expect.

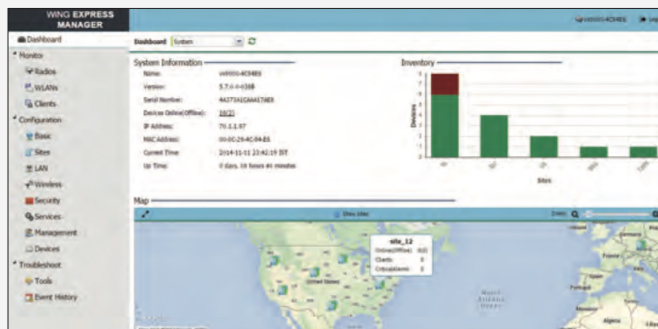
### **POWERFUL ANALYTICS MADE EASY**

WiNG Express presents the volumes of information about your access points and their radios, all of your WLANs, and all of the mobile devices connected to your WLANs in easy-to-understand screens that make it easy to monitor and manage every aspect of your enterprise-class wireless network.

## WLAN Management Made Simple

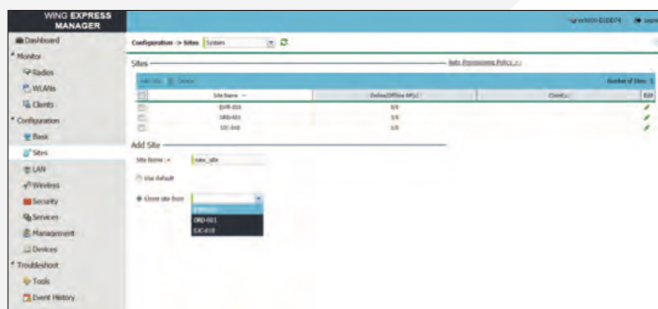
WiNG Express Manager's intuitive and easy-to-understand screens make every aspect of managing your WLAN easy — from initial staging to ongoing daily management.

### SYSTEM-LEVEL (MULTI-SITE) DASHBOARD



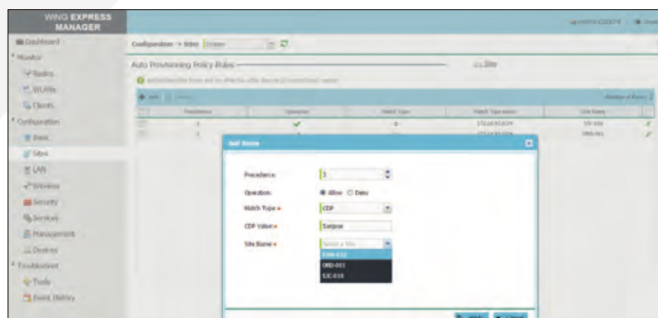
The system-level dashboard presents a map view of all the sites with inventory details for immediate visualization of the entire network. The site-level dashboard allows you to see the status of your access points and their radios, the client devices — including device type — connected to your access points, how much capacity is available, and more. And a drop-down box allows you to view information for your preferred timeframe — the last 30 minutes, the past two hours, or the last 24 hours.

### QUICK AND EASY SITE SETUP



Setting up a multi-site network has never been easier. Site creation from the system level configuration can be as simple as choosing the default template configuration or cloning the desired configuration from an existing site. Specific system level configuration settings you define are pushed out globally and automatically applied to all of your access points in all of your sites or to a specific site, dramatically simplifying the time, effort and cost of network-wide configuration.

### DEPLOYMENT WITHOUT STAGING — AP AUTO-PROVISIONING



WiNG Express Manager's auto-provisioning feature allows you to deploy a multi-site WLAN network without any pre-staging. Policies can be defined for each site to match against parameters such as CDP/LLDP string, AP MAC, and IP address to place APs in a specific site and apply the appropriate configuration. As a result, the time required to deploy your WLAN infrastructure is significantly reduced.

### SYSTEM- AND SITE-LEVEL MONITORING/ANALYTICS



This ongoing system- and site-level log tracks and maintains a complete history of events that have occurred on your WLAN, providing valuable trending information as well as details you need to address a specific incident and prevent a reoccurrence in the future. You can inspect aggregated analytics at the system level or drill down to site-specific details for more granularity.

## Specifications

PRODUCT FEATURES	
PHYSICAL CHARACTERISTICS	
Dimensions	1U, rack-mountable 16.93 in. W x 1.74 in. H x 12.63 in. D 430 mm W x 44.2 mm H x 320.7 mm D
Weight	10 lb./ 4.5 kg
Memory	4GB RAM
Storage	32GB solid-state drive for firmware images and critical data
Power Supply	100 Watts, 100-240V AC PSU @50Hz-60Hz
Power Consumption	30 Watts
USER ENVIRONMENT	
Operating Temperature	32°F to 104°F/0°C to 40°C
Storage Temperature	-4°F to 167°F/-20°C to 75°C
Operating Humidity	5% to 85% at 104° F/40° C
Storage Humidity	5-95%
CAPACITY AND PERFORMANCE	
Express APs Supported	512
Number of Sites	512
WLANs	256
Interfaces	6 10/100/1000 Base-T Ethernet ports
PRODUCT SKUS AND LICENSES	
NX-5500E-100R0-WR	Express Manager Platform w/128 Express AP licenses
NX-5500E-ADP-16	16x Express AP license certificate for NX-5500E
NX-5500E-ADP-64	64x Express AP license certificate for NX-5500E
NX-5500E-ADP-128	128x Express AP license certificate for NX-5500E

### GET THE MANY ADVANTAGES OF 'BIG-BUSINESS' ENTERPRISE-CLASS HIGH-PERFORMANCE WIRELESS NETWORKING IN YOUR SMALL TO MIDSIZE OPERATION WITH EXTREMEWIRELESS WING EXPRESS MANAGER NX 5500E

For more information, visit [www.extremenetworks.com/wlan](http://www.extremenetworks.com/wlan) or access our global contact directory at [www.extremenetworks.com/contactus](http://www.extremenetworks.com/contactus).



<http://www.extremenetworks.com/contact> / Phone +1-408-579-2800

©2016 Extreme Networks, Inc. All rights reserved. Extreme Networks and the Extreme Networks logo are trademarks or registered trademarks of Extreme Networks, Inc. in the United States and/or other countries. All other names are the property of their respective owners. For additional information on Extreme Networks Trademarks please see <http://www.extremenetworks.com/company/legal/trademarks>. Specifications and product availability are subject to change without notice. 11220-1216-09

# Legacy Technology Services

**We Rent & Sell All Types Of Barcode Equipment**

Call now to talk to an expert

**866-271-9891**

[www.LegacyGlobal.com](http://www.LegacyGlobal.com)

Some brands we carry



MOTOROLA

**Intermec**

**DATALOGIC**™

**Honeywell**

**EQUINOX**  
PAYMENTS



## About us

- Legacy Technology Services is a leading nationwide provider of mobile computing, barcode, printers and point of sale equipment and services.
- For over a decade, thousands of clients across North America have trusted us to provide equipment from leading manufacturers backed by the services to support them.

## Latest Hardware from top manufacturers

- Legacy handles virtually every major manufacturer of mobile computing, barcoding and point of sale equipment.

## Expert Repair and Maintenance services

- Legacy is one of the best repair facilities in North America

## Discontinued product sourcing

- They don't make it anymore? Our inventory also includes manufacturer close-outs and discontinued equipment to support our clients legacy infrastructure.

## Trade-in and Disposal services

- That old equipment laying around your facility may still have some value. Legacy routinely purchases equipment from our clients around the globe.
  - Data destruction
  - Hardware disposal
  - Auditing services

## Dedicated client account team

- Dedicated, highly trained account managers are here to answer all your questions and provide top notch service.

## Equipment rental services

- Sometimes renting is a better solution, Legacy's huge rental inventory provides the equipment you need for temporary needs and projects.



[Legacy, Inc.](http://Legacy, Inc.)

160 West Road,  
Ellington, CT 06029

Toll Free: 866-271-9891

Fax: 888-522-4684